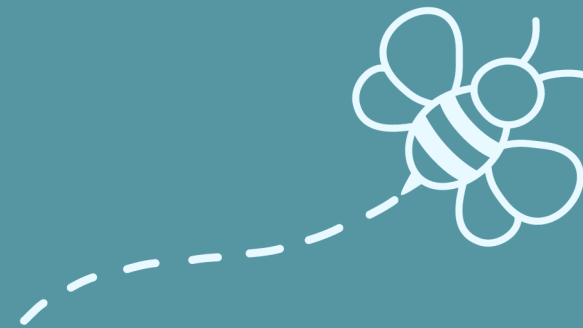


# EASTWOOD POOL SCHEDULE

## JUNE 15 - JUNE 30, 2026



| MON  | TUE  | WED   | THU  | FRI  | SAT   | SUN   |
|--|--|---|--|--|---|---|
| <p><b>Swim Team</b><br/>6-8am<br/>(L4-L8)</p> <p><b>Aqua Fit</b><br/>9-10am<br/>(L4-L8)<br/><i>Lanes unavailable at 8:45</i></p> <p><b>Swim Team</b><br/>4:30-5:15pm<br/>(L3-L7)<br/>5:15-7:30pm<br/>(L1-L8)</p> | <p><b>Masters</b><br/>5:45-8am<br/>(L2-L7)<br/>11am-12pm<br/>(L2-L7)</p> <p><b>Swim Team</b><br/>4:30-5:15pm<br/>(L3-L7)<br/>5:15-7:30pm<br/>(L2-L7)</p> | <p><b>Swim Team</b><br/>6-8am<br/>(L4-L8)</p> <p><b>Aqua Fit</b><br/>8:30-9:30am<br/>(L4-L8)<br/><i>Lanes unavailable at 8:15</i></p> <p><b>Swim Team</b><br/>4:30-5:15pm<br/>(L3-L7)<br/>5:15-7:30pm<br/>(L1-L8)</p> | <p><b>Masters</b><br/>5:45-8am<br/>(L1-L8)<br/>11am-12pm<br/>(L1-L8)</p> <p><b>K&amp;F Swim Lessons</b><br/>9:30-11am (L7-L8)<br/><i>Starting 6/25</i></p> <p><b>Swim Team</b><br/>4:30-5:15pm<br/>(L3-L7)<br/>5:15-7:30pm<br/>(L2-L7)</p> | <p><b>Swim Team</b><br/>6-7:30am<br/>(L1-L8)<br/>7:30-8am<br/>(L3-L8)</p> <p><b>Aqua Fit</b><br/>9-10am<br/>(L4-L8)<br/><i>Lanes unavailable at 8:45</i></p> <p><b>K&amp;F Swim Lessons</b><br/>10:30am-12pm<br/>(L7-L8)</p> | <p><b>Masters</b><br/>7-8:15am<br/>(L2-L7)</p> <p><b>Swim Team</b><br/>8:15-10am<br/>(L1-L8)</p> <p><b>Swim Lessons</b><br/>10am-1pm (L2-L3)<br/>1-2:30pm (L2)</p> <p><b>Cardio Surge</b><br/>10:30-11:30am<br/>(L4-L8)<br/><i>Lanes unavailable at 10:15</i></p> | <p><b>Swim Lessons</b><br/>8:45-10am (L8)<br/>9am-4pm (L5)</p> <p><i>*Private lessons are subject to change; this schedule may vary each week*</i></p> <p><b>Group Lessons</b><br/>9:30am-1pm<br/>(L6-L8)</p> |

**\*Subject to Change\***  
The aquatic center closes 30 minutes prior to the club.

**Swim Team Cancellations:**  
Sat June 20, Fri June 26, Sat June 27